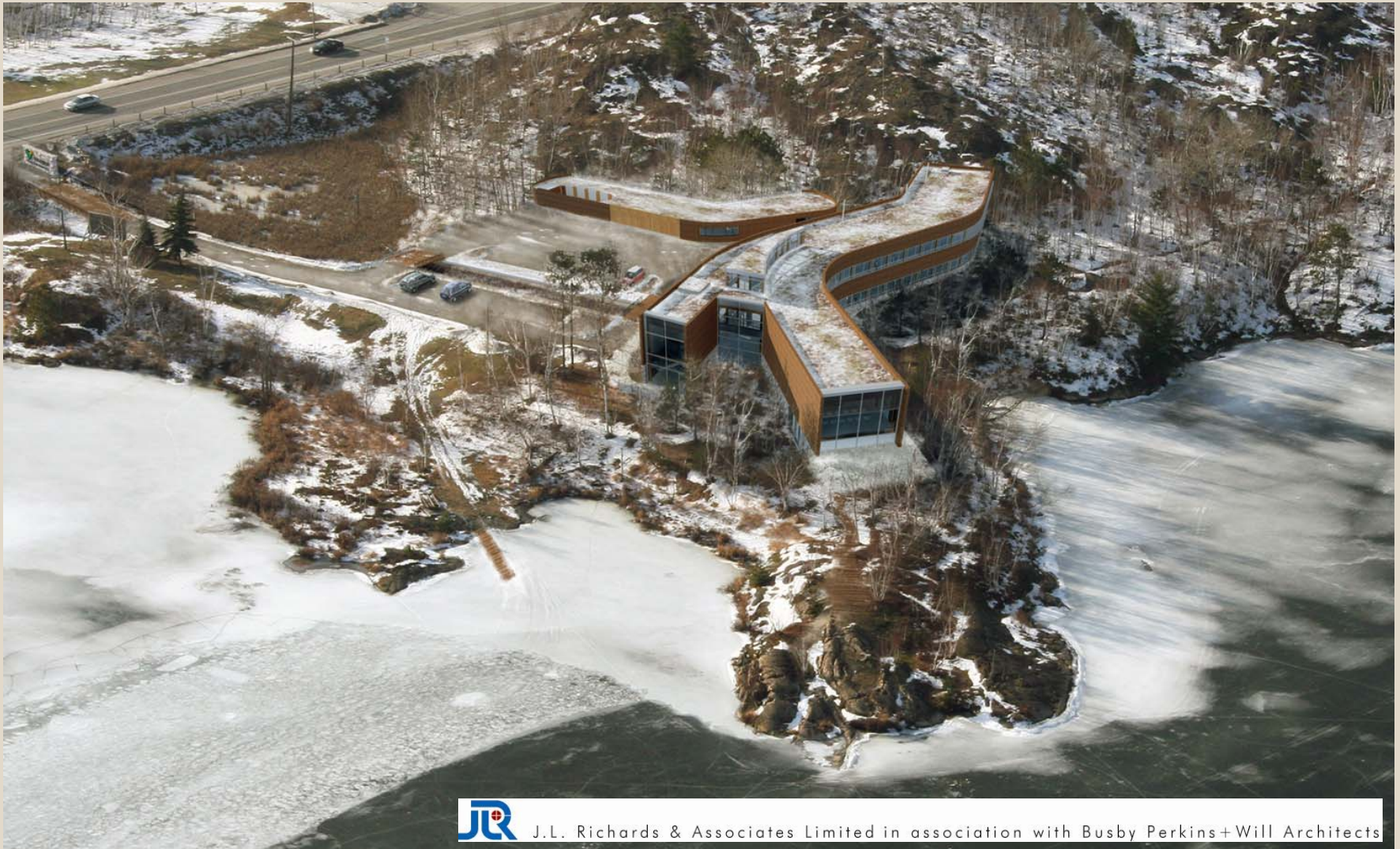


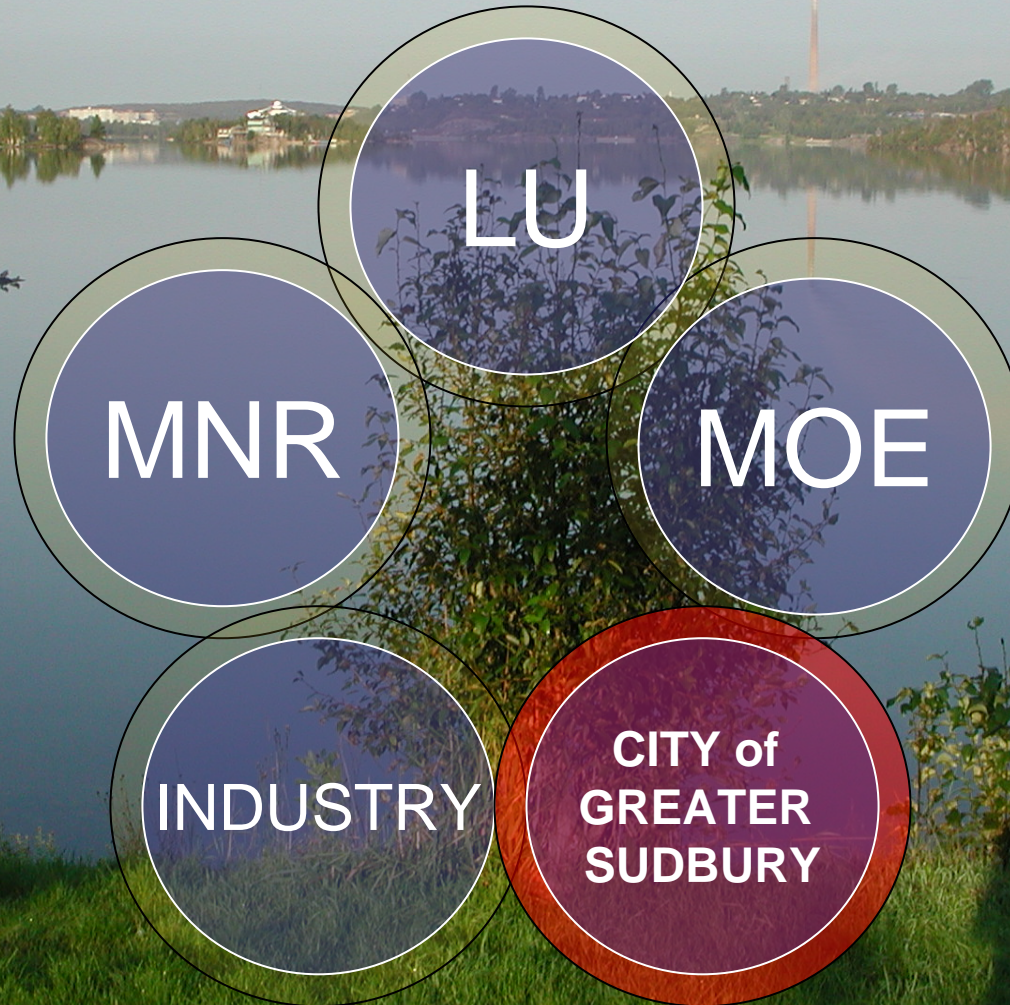
Vale Inco Living with Lakes Centre



J.L. Richards & Associates Limited in association with Busby Perkins+Will Architects

Sustainability through research and education, source water protection, restoration of damaged ecosystems and energy conservation

Cooperative Freshwater Ecology Unit

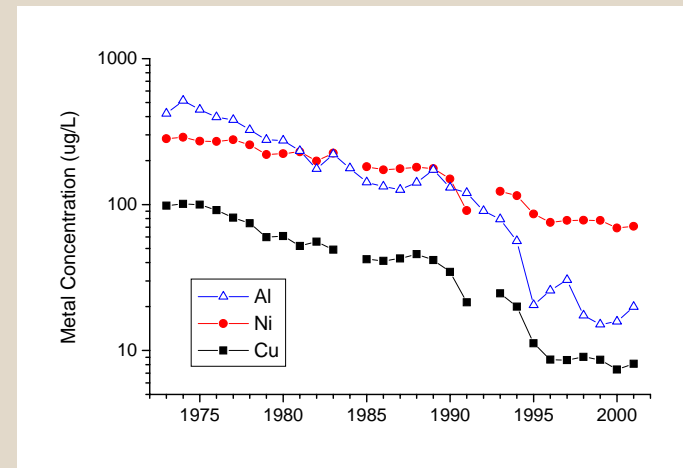
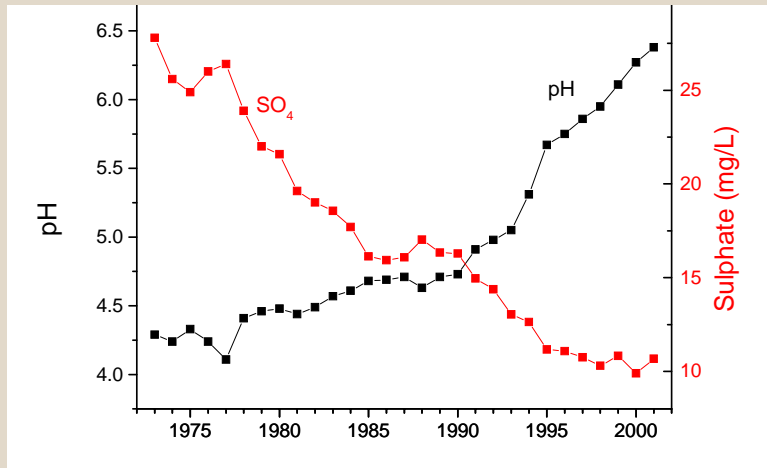
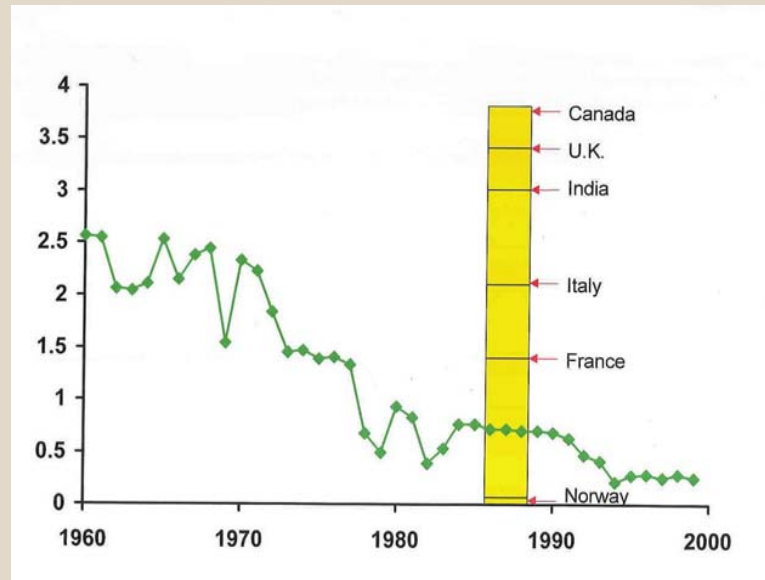


My Sudbury: A City of Lakes

Google 'City of Lakes'
Sudbury is number 9 out of 33.5 million



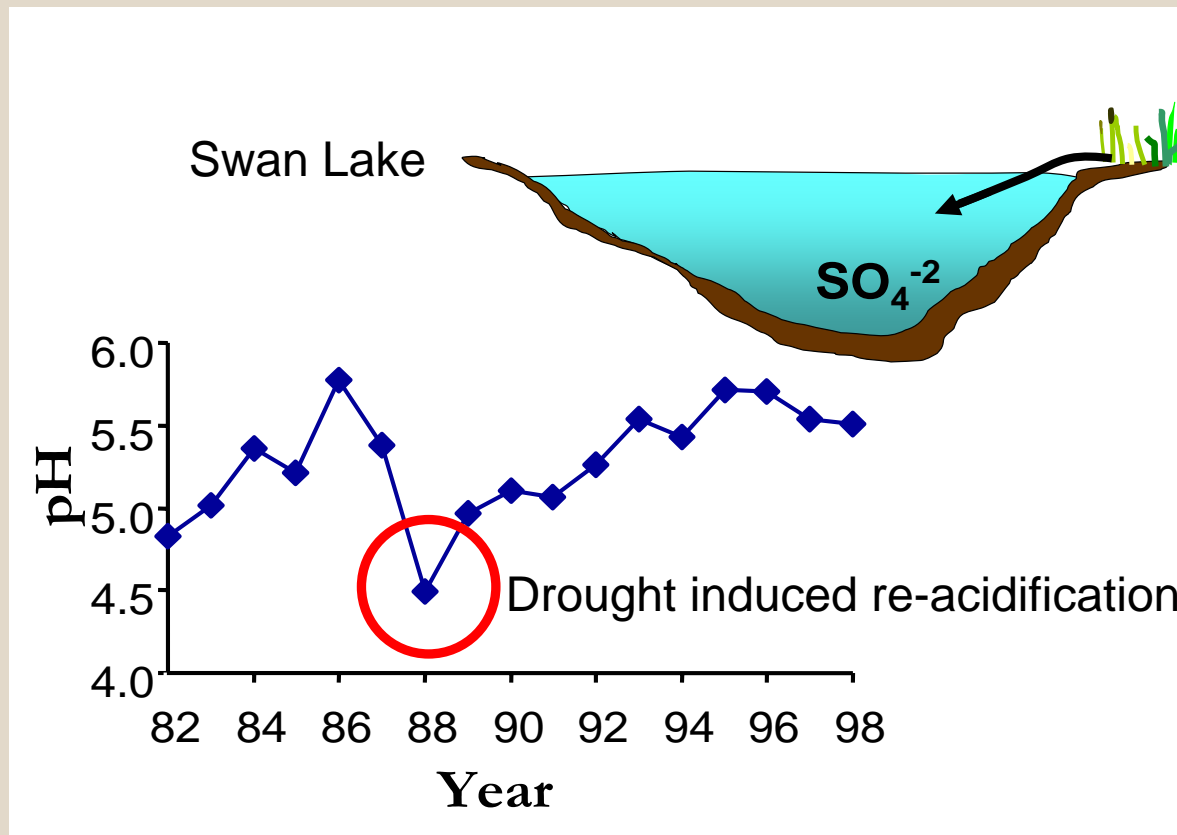
Benefits of emission reductions



Acidity has declined

Metals have declined

Water – the Blue-Gold of the 21st Century Threatened by Multiple Stressors New and Old



Re-acidification caused by oxidation of sulphur stored in the watershed: Our 100 year legacy.

Research Issues

Climate Change

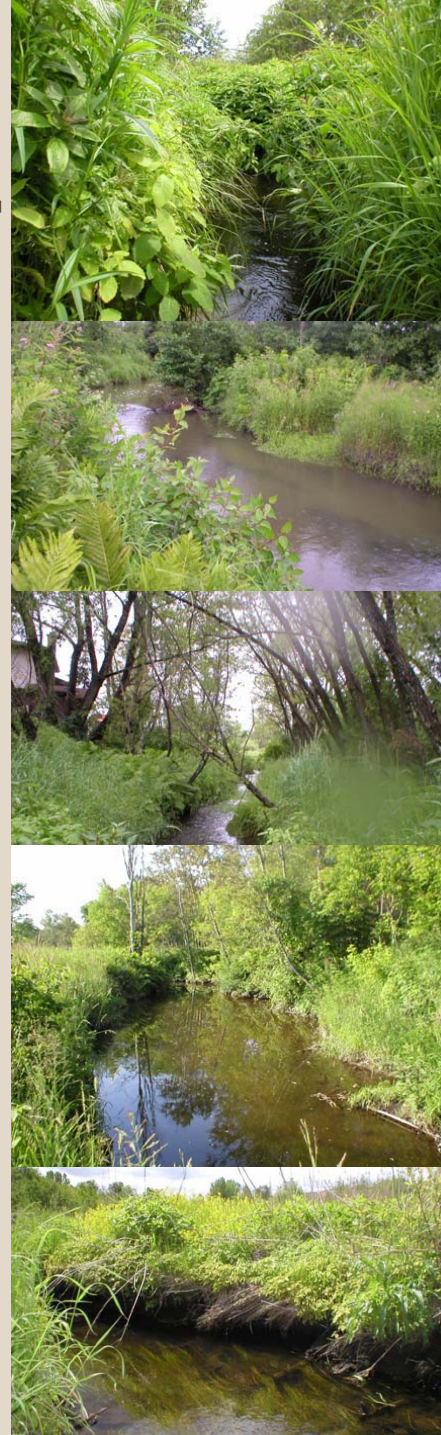
Source Water Protection

Ecological & Human Health Risk Assessment (Sudbury Soil Study)

Watershed Management

Invasive species

Contaminants in Fish and Water



Benefits from Research

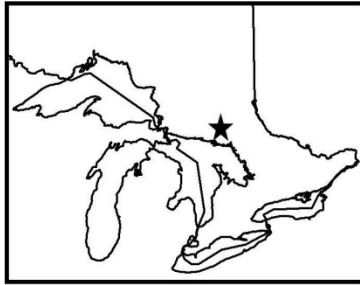


Water Quality Protection/Environmental Restoration
Job Creation
Training/Retention HQP
Knowledge/Technology Transfer
Science-Based Policy Development

Source Water & Ecosystem Protection



- Drinking water protection
- Storm water management

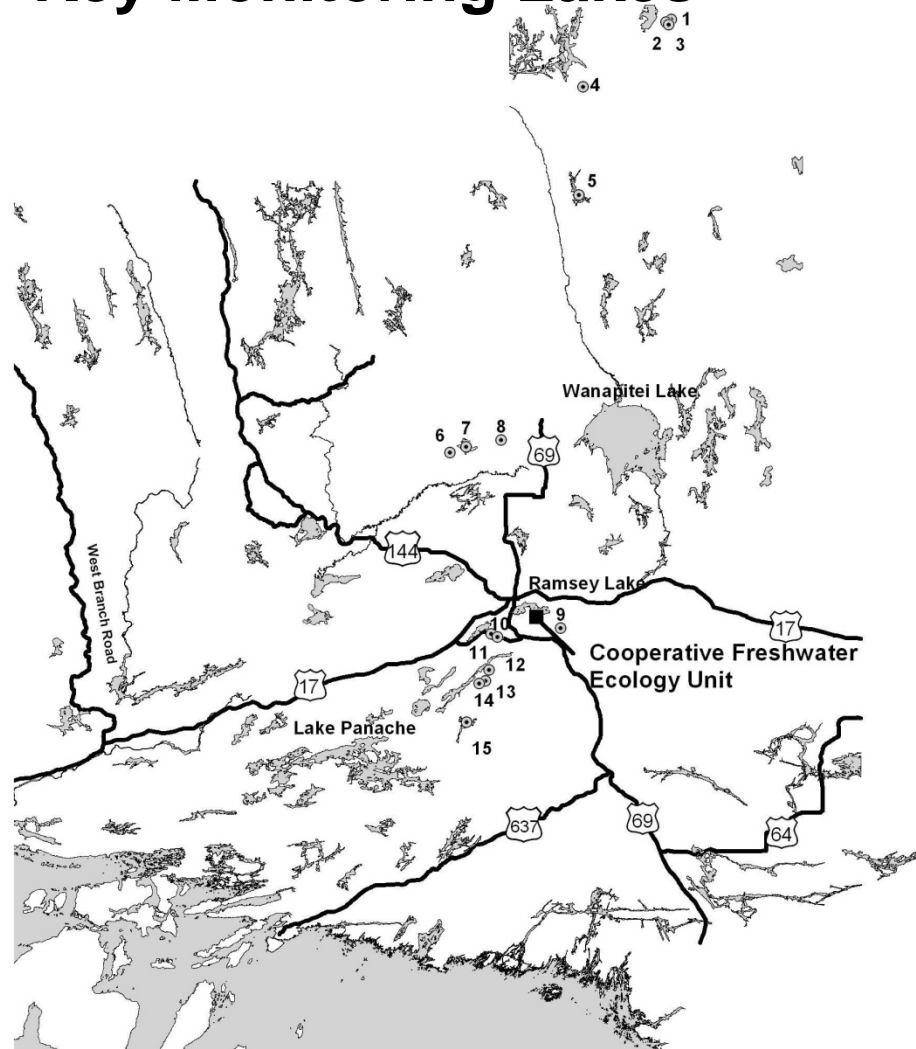


Key Monitoring Lakes

1. Aurora Whitepine
2. Little Whitepine
3. Whirligig
4. Whitepine McLeod
5. Landrie
6. Sans Chambre
7. Nelson
8. Joe
9. Daisy
10. Middle
11. Hannah
12. Lohi
13. Clearwater
14. Swan
15. Wavy



10 0 10 20 Kilometers

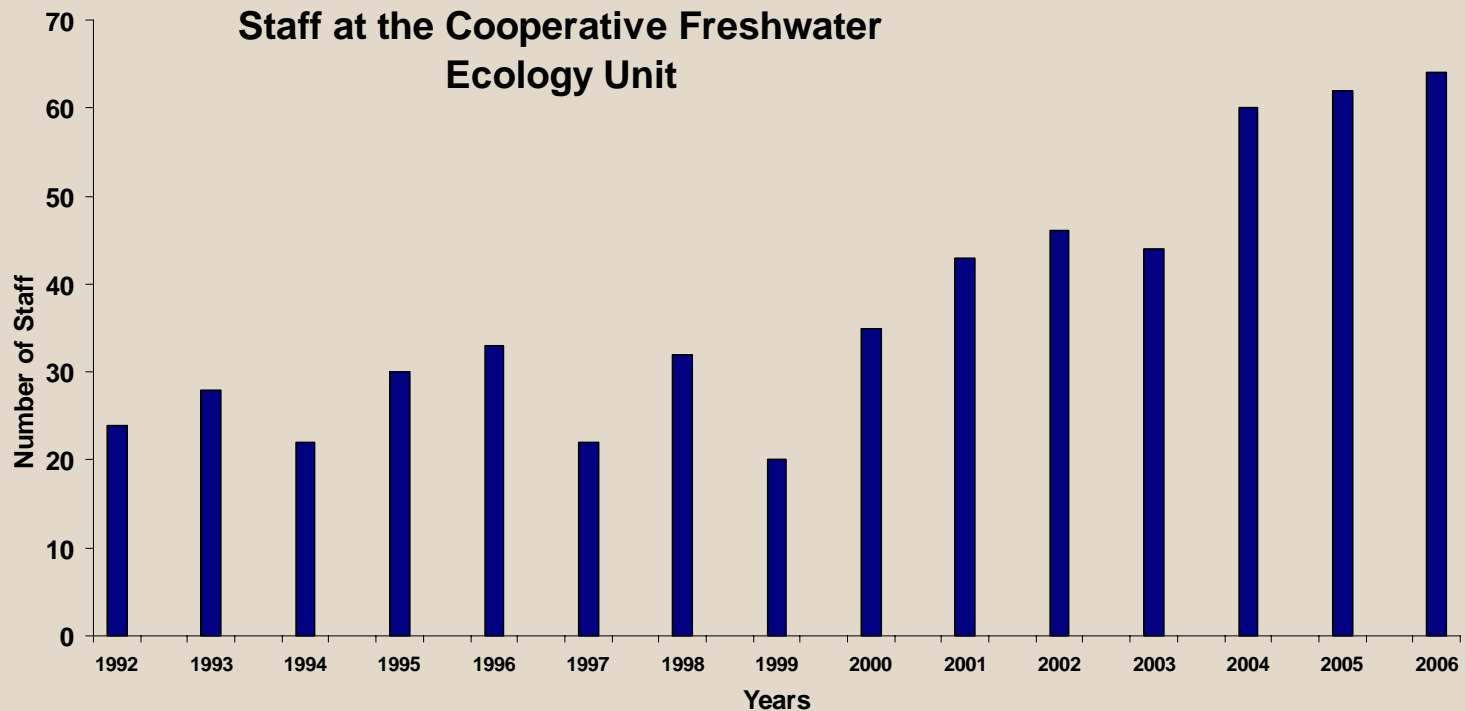


Section 8.5 Surface Water Resources – Lakes, Rivers and Streams p.79

Several lakes have been used for long-term monitoring of aquatic ecosystem recovery (**Clearwater, Lohi, Middle, Hannah, Swan, Joe, Nelson, Sans Chambre**).

HQP Training, Employment and Retention

- 23 M.Sc. students
- ~200 L.U. interns and summer students



International Exchange

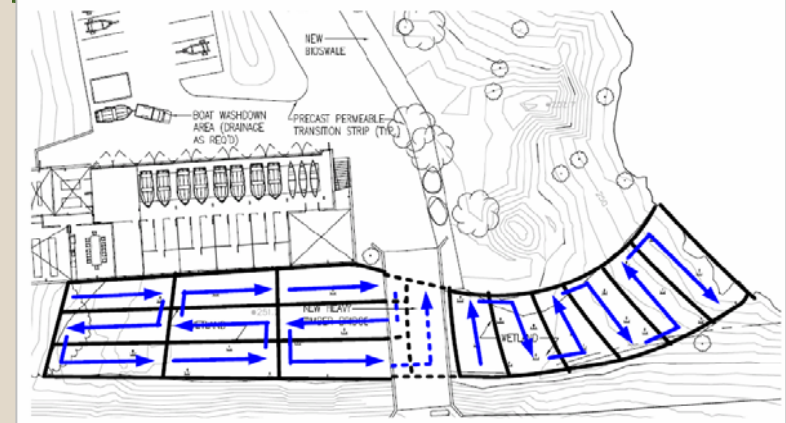
Applying the Sudbury Methods – Regional Centre of Expertise in Sustainable Development



Commercialization: Emerging Technologies



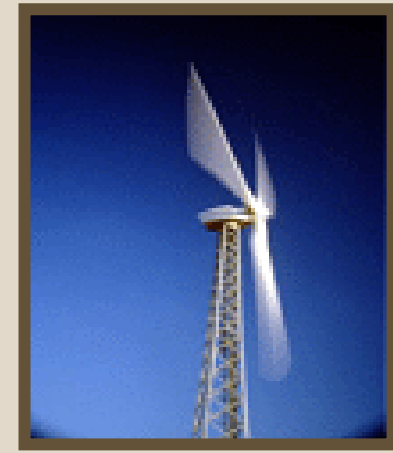
SolarBee - Lake Mixing Apparatus for climate change experiments



Constructed Wetland experiments: Patentable microbial and plant strains for bioremediation

LEED Platinum Design-Catalyst for Eco-Industry

- Local Construction Jobs
- International recognition for Sudbury
- Cambrian College Sustainable Centre of Excellence



Wind Energy



Breathing Wall



Building Materials



Green Roof



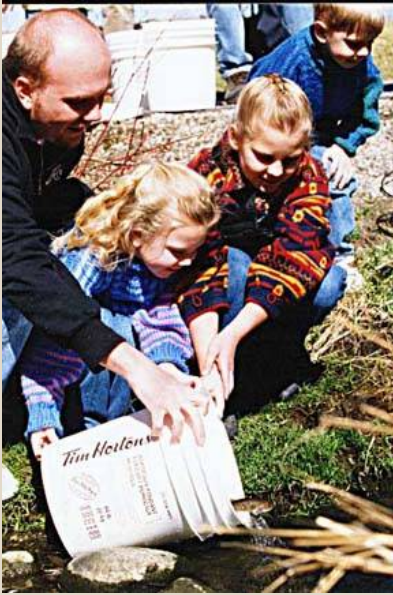
Solar panels



Constructed Wetlands

Community Leadership

Junction Creek Restoration Program



'There is hope if you try'

Conservationist Jane Goodall brings message to Sudbury



teachers about environmental problems and their solutions.

Goodall is renowned for her 40 years of work with chimpanzees in Africa. She is in Sudbury to open the new Science North exhibit *Discovering Chimpanzees: The Remarkable World of Jane Goodall*. In addition to unveiling the first-class exhibit Monday, she also appeared at the opening of the \$6.5-million Imax film, *Jane Goodall's Wild Chimpanzees*. (See story and pictures on Page 3)

"The whole point of my Roots and Shoots groups are to encourage young people first of all to learn about the problems, and secondly to help everyone understand that you can follow your dreams, you can make a difference."

As she released both large and small brook trout into Junction Creek beside Hnatyshyn Park Tuesday, Goodall said her gesture was "a symbol of hope."

This is an important gesture because "I believe the future of the world is in jeopardy. I've met so many young people who feel terribly depressed that we have compromised their future. It's very symbolic that we've released fish into a body of water that was so filthy and polluted and now it is clean enough to support these fish," she said.

Jane Goodall releasing brook trout in Junction Creek

Quality of Life



A Growing Network of Partners

Government Funding Partners

- CFI/OIT
- NSERC
- Environment Canada
- Canadian Wildlife Service
- Industry Canada
- HRDC/FedNor/MNDM
- **City of Greater Sudbury**

Industry Partners

- Vale Inco
- Xstrata Ltd.
- Placer Dome (CLA) Ltd.
- Goldcorp Inc.
- Williams Operating Corp.
- Newmont Canada Inc.

University Collaborators


- Alberta
- Laurentian
- York
- Queen's
- Guelph
- Wisconsin
- Regina
- Bergen, Norway
- Indiana
- Dartmouth College
- Acadia
- Toronto

Benefits for the City of Greater Sudbury

The Northern Artist Gallery Presents:

PICTURE OUR LAKES

Photography Contest



(Photo: D. Parnham)


To celebrate the more than 300 lakes in the Greater Sudbury area, The Northern Artist Gallery is hosting a "Picture our Lakes" photography contest. Residents and visitors are encouraged to submit their most beautiful Sudbury lake photos in four categories: Spring, Summer, Fall and Winter.

Winning Photo(s) will be displayed in the new Living with Lakes Centre at Laurentian University!
(www.livingwithlakes.ca)

Submission Deadline:
June 16, 2007 (12 noon)

Please send or deliver submissions to:
Artists on Elgin
168 Elgin Street
Sudbury, ON, P3E 3N5
Telephone: 705-674-0415
(*Please read complete contest rules*)
www.artistsoneigin.ca

For more information about Sudbury's beautiful lakes go to: <http://adoptalake.laurentian.ca>



Artists on Elgin mySudbury



October 26, 2006

- International Image "City of Lakes"
- Enriching Sudbury's research cluster
- Climate Change Adaptation Office
- Watershed Restoration
- Cambrian College Sustainable Energy Centre
- Drinking water protection

- Catalyst for:
- Eco-industry
 - Building Code Policies

Cementing a 15 Year Partnership

- Annual Living with Lakes Forum – Science North
- Lake Water Quality Program
- Lake Stewardship Support
- Junction Creek Stewardship Committee
- Source Water Protection
- VETAC-Watershed Sub-Committee
- Official Plan Input
- Core Review Team Living with Lakes Centre

